

## Comprehensive Exam Results (Spring 2024/ Spring 2025)

### Executive Summary

This report presents an analysis of the Master's Comprehensive Examination results for Spring 2024 and Spring 2025, encompassing candidates from the Master's in Education Leadership (MEL) and Master's in Special Education (MSPED) programmes. The findings reflect strong academic performance across both cohorts and semesters, with the vast majority of candidates meeting or exceeding the 80% benchmark.

Out of 45 candidates, 62.2% were enrolled in the MEL programme, and 37.8% in MSPED. The cohort was evenly distributed across semesters, with 48.9% sitting the exam in Spring 2024 and 51.1% in Spring 2025. The overall mean score was 84.92%, with 97.7% of candidates scoring 80% or above. MEL candidates had a slightly higher average score (85.48%) compared to MSPED candidates (84.00%), though the latter achieved a higher rate of candidates meeting the benchmark (99.9% vs. 96.4%).

By semester, Spring 2025 candidates achieved a marginally higher mean score (85.24%) compared to Spring 2024 (84.59%). Notably, Spring 2024 had a perfect pass rate of 100%, whereas 95.6% of Spring 2025 candidates met the 80% threshold. When disaggregated by both semester and programme, MEL candidates showed consistent performance across both years, while MSPED candidates demonstrated notable improvement, with their average increasing from 82.78% in Spring 2024 to 85.38% in Spring 2025. This trend highlights effective academic support and continuous enhancement within the MSPED programme.



## 1. Overall Results

**Table 1**

*Descriptives for Master's Comprehensive Exam*

		N	%
Major	MEL	28	62.2%
	MSPED	17	37.8%
Semester	Spring 2024	22	48.9%
	Spring 2025	23	51.1%

The table above presents descriptive statistics for candidates taking the master's comprehensive examination, categorised by major and semester. A majority (62.2%) are enrolled in MEL, while 37.8% are in MSPED. The data demonstrate results for two semesters, with a nearly equal distribution—48.9% in Spring 2024 and 51.1% in Spring 2025—suggesting a consistent number of candidates progressing through the programme.

**Table 2**

*Overall Masters Comprehensive Exam Scores*

	N	Mean	Less than 80%	80 - 84%	85-89%	90- 100%	At or above 80%
Overall	45	84.92	2.2%	53.3%	22.2%	22.2%	97.7%

**Figure 1**

*Overall Masters Comprehensive Exam Scores*

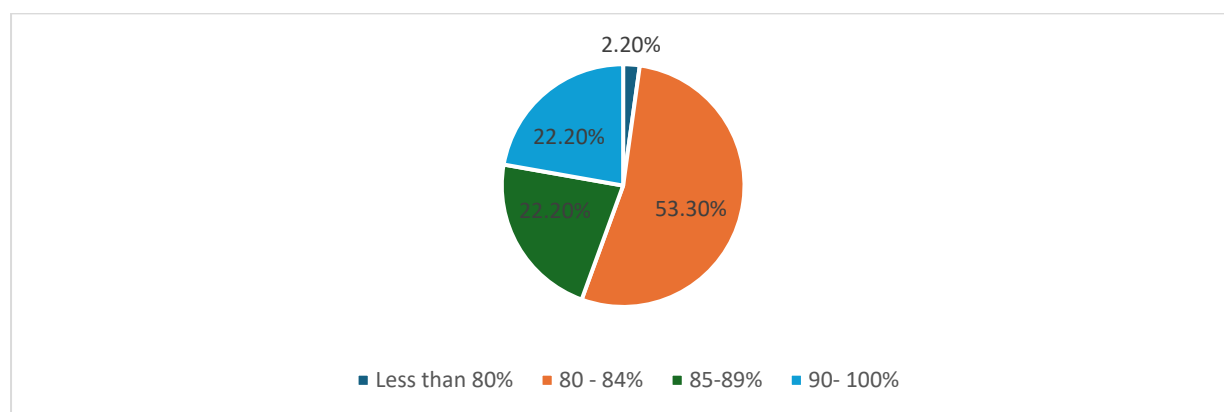


Table 2 and Figure 1 present the overall scores for the master's comprehensive examination. With 45 candidates sitting the exam, the average score is 84.92. A very small percentage (2.2%) scored below 80%, while the majority (97.7%) achieved at least 80%. More than half (53.3%) scored between 80–84%, while 22.2% fell into both the 85–89% and 90–100% ranges. These results indicate strong overall performance, with most candidates meeting or exceeding the 80% benchmark.



## 2. Masters Comprehensive Exam Scores by Programme

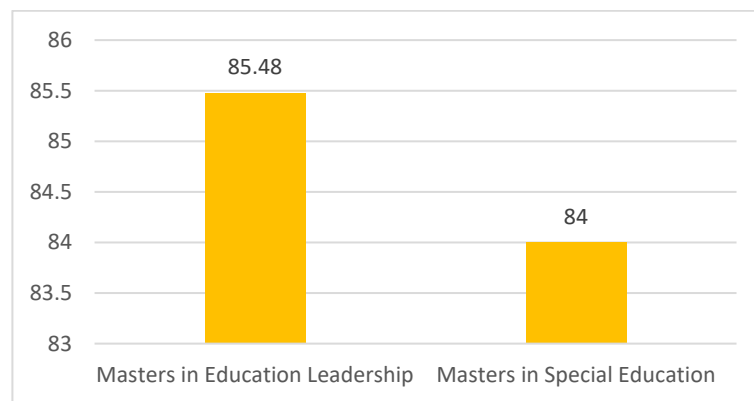
**Table 3**

*Master's Comprehensive Exam Scores by Programme*

Programme	N	Mean	Less than 80%	80 - 84%	85-89%	90- 100%	At or above 80%
MEL	28	85.48	3.6%	46.4%	25%	25%	96.4%
MSPED	17	84.00	0%	64.7%	17.6%	17.6%	99.9%

**Figure 2**

*Mean Score by Programme*



**Figure 3**

*Master's Comprehensive Exam Scores by Programme*

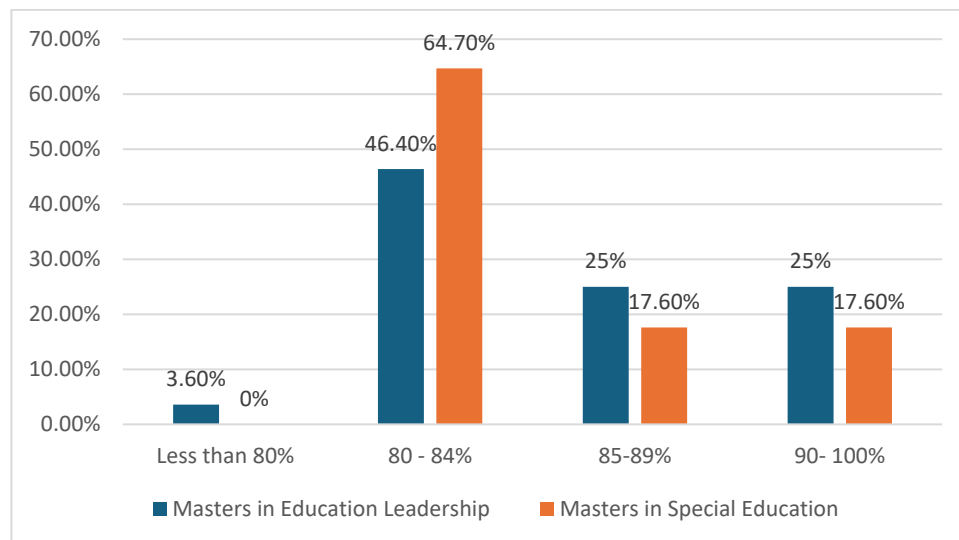




Table 3 and Figures 2 and 3 present the master's comprehensive examination scores by programme. MEL candidates (N=28) had a mean score of 85.48, with 96.4% scoring at or above 80%. A small proportion (3.6%) scored below 80%, while the largest group (46.4%) fell within the 80–84% range, followed by 25% in both the 85–89% and 90–100% categories. For MSPED candidates (N=17), the mean score was 84, slightly lower than the Leadership programme. However, none scored below 80%, with 64.7% in the 80–84% range, 17.6% in the 85–89%, and 17.6% in the 90–100% range. The percentage of candidates scoring at or above 80% was 99.9%, slightly higher than in the MEL programme. Overall, both programmes show strong performance, with nearly all candidates meeting the 80% benchmark, though MEL candidates had a slightly higher mean score and a more balanced distribution across score ranges.

### 3. Masters Comprehensive Exam scores by semester

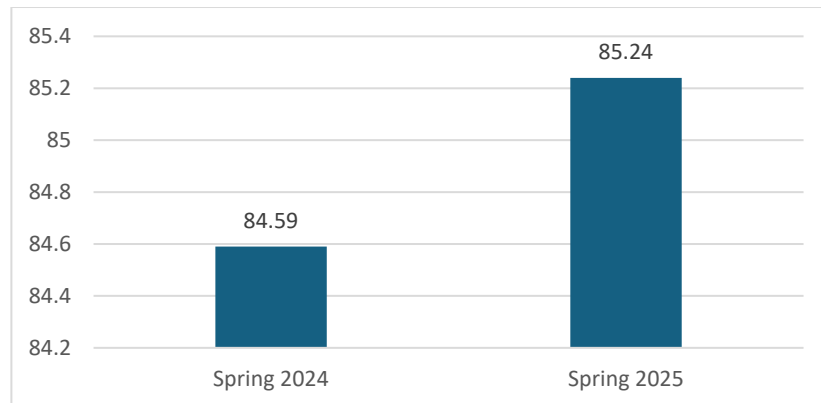
**Table 4**

*Master's Comprehensive Exam Scores by Semester*

Semester	N	Mean	Less than 80%	80 - 84%	85-89%	90- 100%	At or above 80%
Spring 2024	22	84.59	0%	59.1%	22.7%	18.2%	100%
Spring 2025	23	85.24	4.3%	47.8%	21.7%	26.1%	95.6%

**Figure 4**

*Mean Score by Semester*





**Figure 5**  
*Master's Comprehensive Exam Scores by Semester*

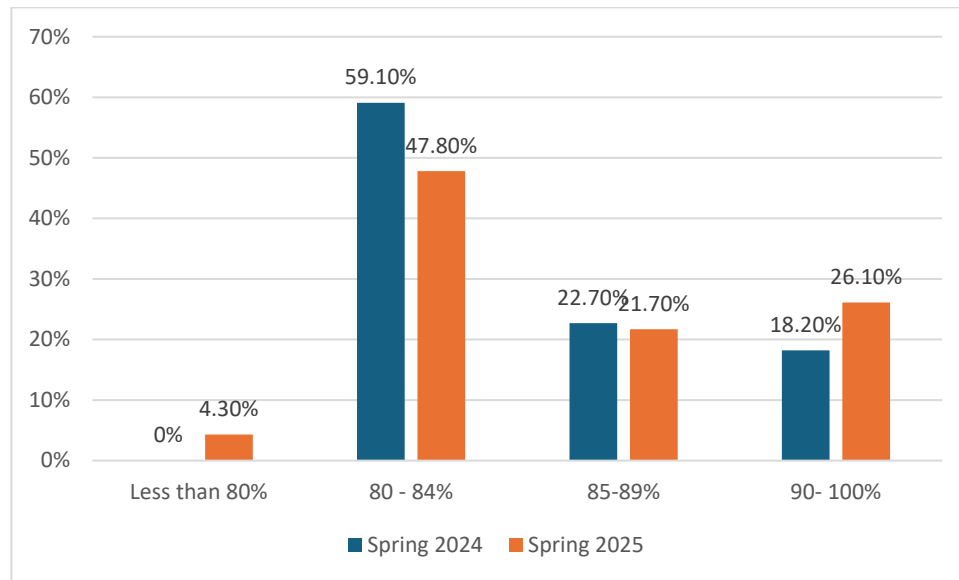


Table 4 and Figures 4 and 5 present the master's comprehensive examination scores by semester. Spring 2024 candidates (N=22) had a mean score of 84.59, with 100% scoring at or above 80%. The majority (59.1%) fell within the 80–84% range, followed by 22.7% in the 85–89% range and 18.2% in the 90–100% range. For Spring 2025 candidates (N=23), the mean score was slightly higher at 85.24, though 4.3% scored below 80%. The largest group (47.8%) was in the 80–84% range, with 21.7% in the 85–89% range and 26.1% in the 90–100% range. While Spring 2025 had a higher mean score and more candidates in the top scoring category, Spring 2024 achieved a perfect 100% pass rate ( $\geq 80\%$ ), compared to 95.6% in Spring 2025.

#### 4. Masters Comprehensive Exam Scores by Semester and Programme

**Table 5**  
*Masters Comprehensive Exam Mean Scores by Semester and Programme*

	Spring 2024	Spring 2025
MEL	85.85	85.17
MSPED	82.78	85.38



Figure 6  
Comprehensive Exam Mean Scores by Semester and *Programme*

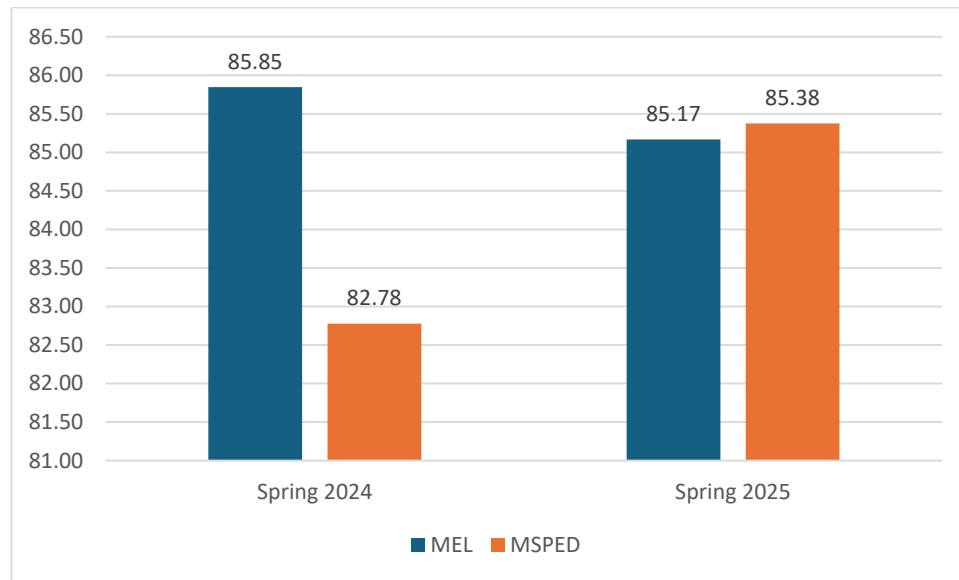


Table 5 and Figure 6 present the mean scores for the master's comprehensive examination, broken down by semester and programme. MEL's candidates had a slightly higher mean score in Spring 2024 (85.85%) compared to Spring 2025 (85.17%), suggesting consistent performance across semesters with minimal variation. MSPED's candidates showed a notable improvement, with their mean increasing from 82.78% in Spring 2024 to 85.38% in Spring 2025. Overall, while MEL scores remained steady, MSPED's candidates in Spring 2025 performed better than those in Spring 2024, narrowing the gap between the two programmes.