

“eduroam” Wifi Configuration Guide

USER GUIDE



Objective

The objective of this guide is to provide a clear, standardized, and secure method for QU end-users to connect their personal devices to eduroam Wi-Fi Network. By following these instructions, users will ensure reliable connectivity while maintaining compliance with university IT security standards.

General Requirements

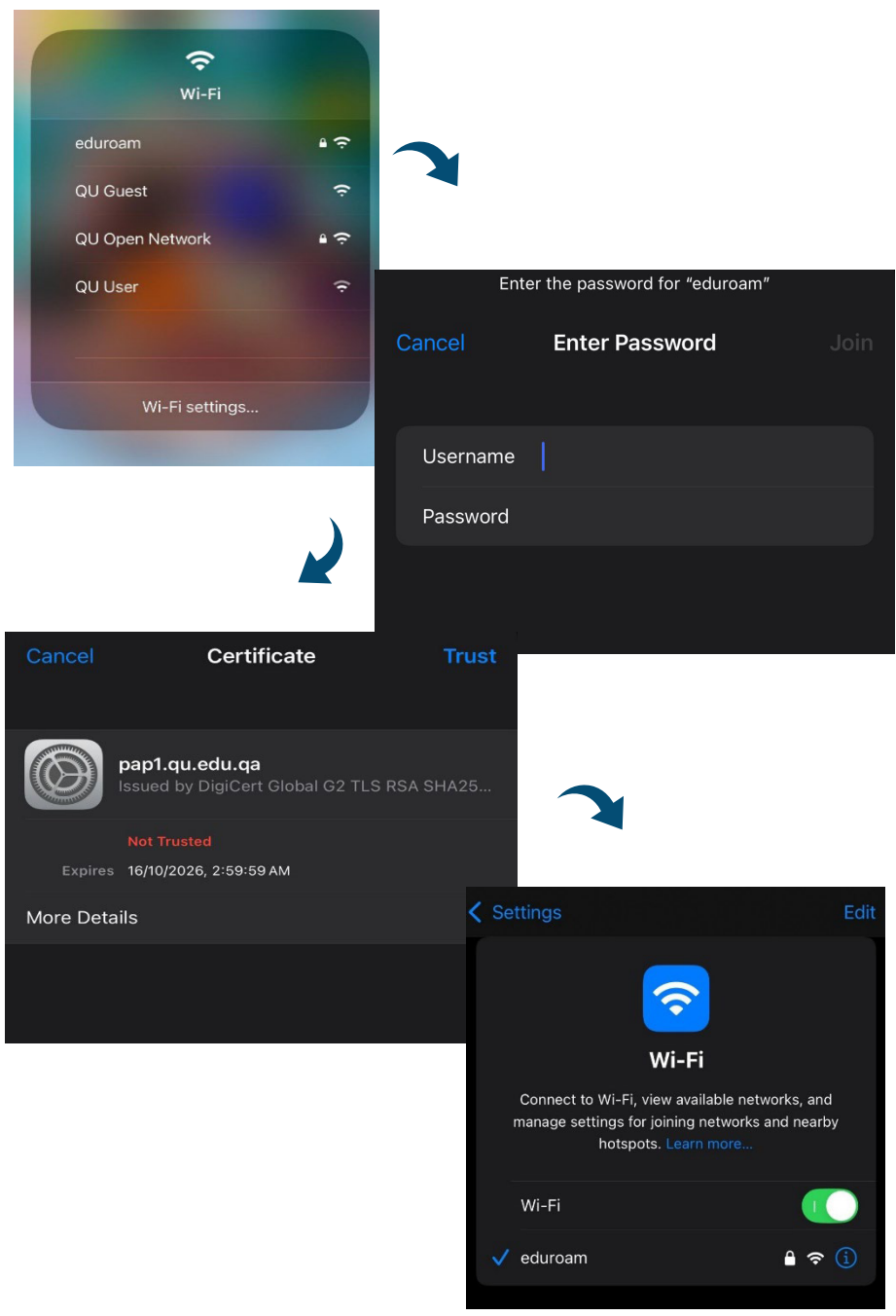
- **SSID Name:** “eduroam”
- **Username:** QU Username (abc@qu.edu.qa)
- **Password:** QU Password

Pre-Connection Checklist

- The date and time on your device are correct.
- You have received your credentials from QU ITS Department.
- Restart your device for refreshing the device.
- Contact ITS helpdesk if connection problems persist.

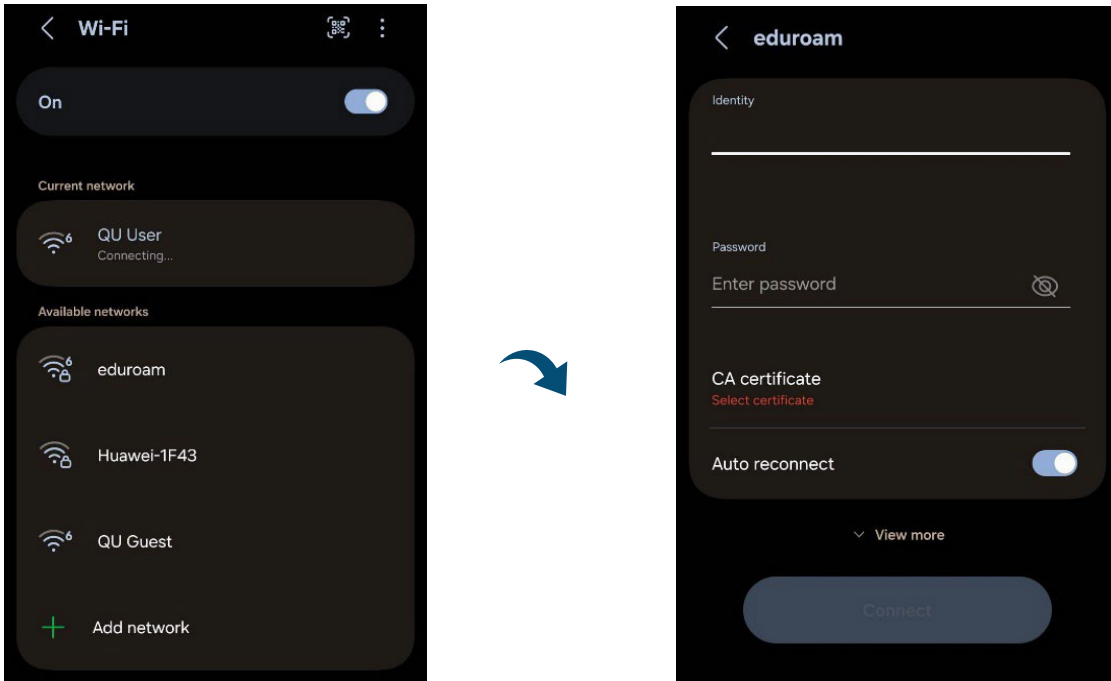
iOS Devices

1. Click on “eduroam” Wi-Fi
2. Enter your QU Username (abc@qu.edu.qa) and Password & click JOIN.
3. Click on TRUST.



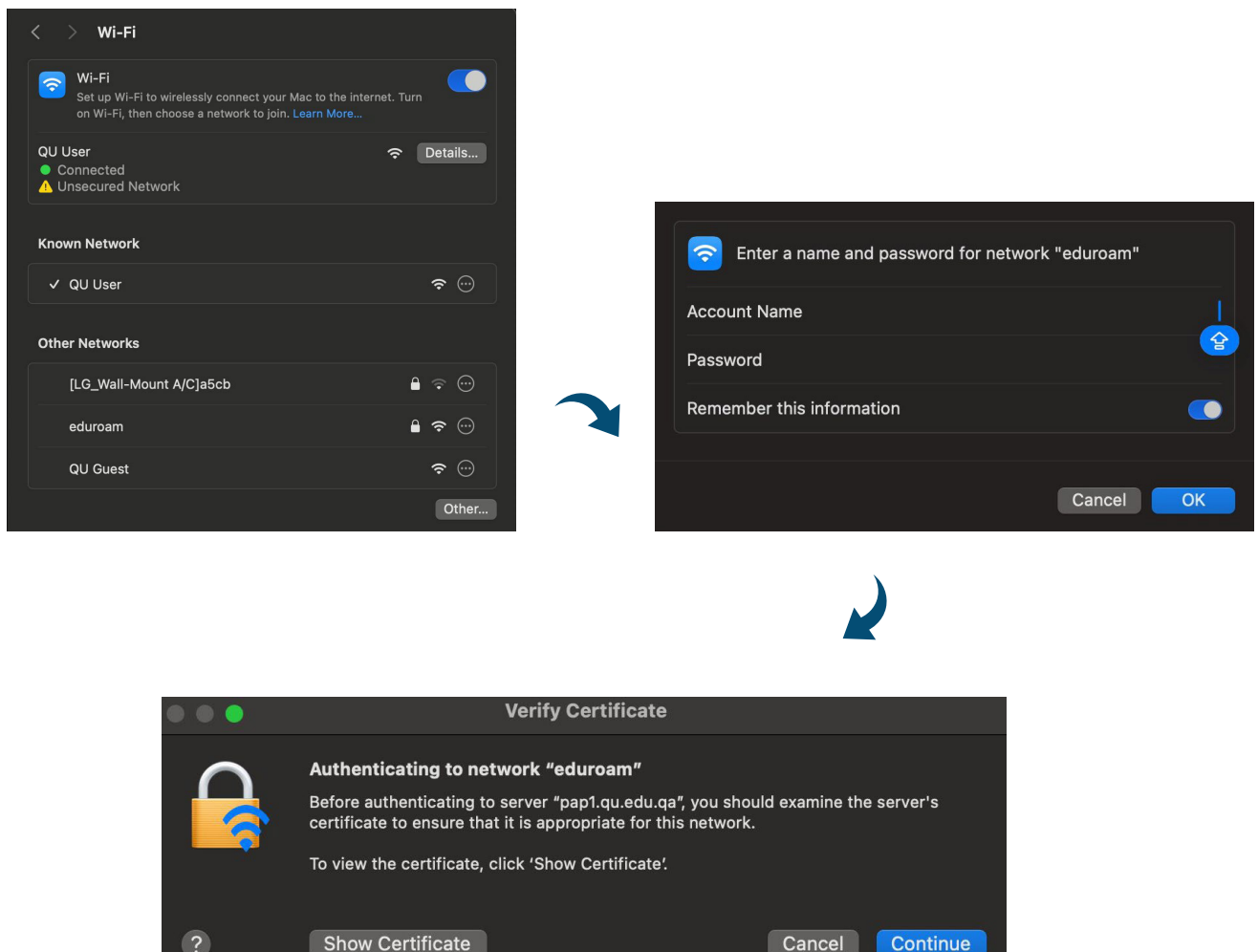
Android Devices

1. Click on “eduroam” Wi-Fi
2. Enter your QU Username (abc@qu.edu.qa) and Password, then choose certificate Trust on First Use (TOFU) or Don't Validate



Mac OS Devices

1. Click on “eduroam” Wi-Fi
2. Enter your QU Username (abc@qu.edu.qa) and Password & click OK
3. Click Continue when the network authentication warning message appears



Windows Devices

1. Click on “eduroam” Wi-Fi
2. Enter your QU Username (abc@qu.edu.qa) and Password & click OK.
3. Click on Connect.

